



Recommended Classroom Set-Up Procedures

Maximize the Success of “Practice-While-You-Watch” Training Techniques

The program your future class will be participating in now includes “practice-while-you-watch” training. This instructional technique enables participants to perform standardized First Aid/CPR/AED training skills along with a DVD, while their classroom instructor simultaneously provides individual guidance.

The Right Classroom Setup Can Make a Big Difference

Since classroom participants practice what they see, as they see it, it is important that your training area be set up to maximize their learning opportunities and create the best possible learning environment.

You are responsible for the following:

- Participants must have an unobstructed view of the TV monitor during the entire class including visibility from the floor space designated for skills practice.
- Enough floor space for each participant to practice their skills comfortably as well as enough room for instructors to walk around, so they can evaluate participants in action and assist them with their skills.
- Tables and chairs for all participants as well as additional equipment as specified on the Statement of Agreement.

Training conducted in smaller conference rooms and hallways can impede the ability of participants to properly follow DVD exercises and hinder the amount of personalized attention participants can receive from the instructor.

Choose From Two Recommended Classroom Setups

We’ve included illustrations of two effective classroom setups. Each of these setups makes it easy to facilitate classroom discussions and DVD presentations, enhancing each participant’s training experience and providing them with the knowledge and skills necessary to respond to emergencies.

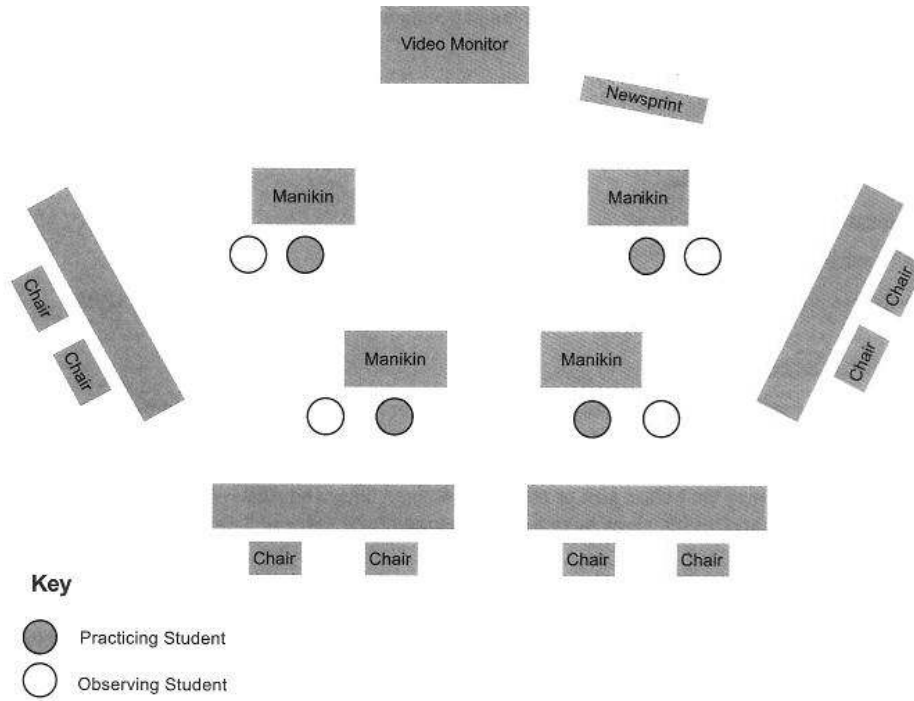
If the above requirements can not be fulfilled or the suggested classroom set-ups are not possible in the space provided, please contact your account manager (contact information is listed on reverse side) immediately to discuss alternative solutions.



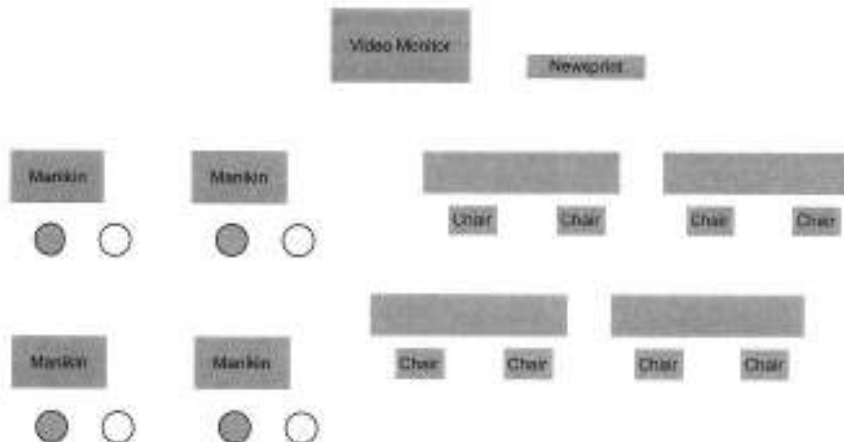
Trained. Empowered. Prepared.

Improve Comprehension With Either of These Classroom Setups

Classroom Setup #1:



Classroom Setup #2:



For more information, contact:

Sara Weier
Workplace/Community Manager
Badger Chapter
P 608-227-1260
F 608-227-1264
E sweier@arcbadger.org
W www.arcbadger.org

